

Xtreme Products Inc.

Kit No. XTPIRS2

3 INCH

09-Up Polaris Ranger with Independent Rear Suspension

Read these instructions carefully. Xtreme recommends, a professional mechanic perform the installation. Care should be taken to follow all standard safety procedures.

A thorough inspection of the suspension should be made prior to performing the installation. Any worn, bent or broken parts should be replaced. After installation another inspection should be made, checking for loose components or missing hardware. Inspect, again after eight hours of operation.

To begin, check to make sure all components and necessary tools are on hand.

Components:

Two brackets per side in the front, including hardware and spacers

Two brackets per side in the rear, including hardware and spacers.

Relocating brackets for the sway bar, including hardware.

Disassembly / Installation Procedure

1.)Begin by loosening the lug nuts on both front tires. Raise the unit, using a suitable lifting device or procedure, until the front tires are off the ground. If using a floor jack with stands, chock the rear wheels to prevent the unit from rolling. If using jack stands, make sure the stands are placed under the frame and not the body. Make sure the unit is stable and secure.

2.)Remove the tires / wheels.

***NOTE:** Now is a good time to check the threads on the lug studs. Check for rust, pulled threads or other deterioration that could cause a stud/thread failure.*

3.) Remove the upper shock attachment bolt and loosen the bottom bolt to allow the shock to be pulled outward. Insert one of the supplied brackets inside the factory shock location, at the rear of the channel. Install the supplied bolts along with the spacers inside the channel. Place the other bracket onto the bolts on the outside of the channel. Install the nuts, but do not tighten at this time. Align the shock with the mounting location in the new bracket and install bolt and nut. All hardware can be tightened at this time. Refer to the Diagrams to ensure proper location of all brackets.

4.)Proceed to the other side and repeat the steps listed.

**Front diagrams
View is of Passenger side**



REAR Disassembly / Reassembly

- 5) Lift the rear of the bike and place jack stands to support the weight and stabilize the bike. Remove the wheels.
- 6) Remove the upper shock attachment bolt and loosen the bottom bolt to allow the shock to be pulled outward. Install the relocation brackets as shown in the picture and be sure to install the spacer in the factory cross-member. There is a factory hole in the frame rail to install the 3/8x1.0 bolt into. Install one bracket on each side of the cross-member. Repeat this on the opposite side.



7) Reinstall the shocks and be sure to install the washer included as shown one on each side of the shock

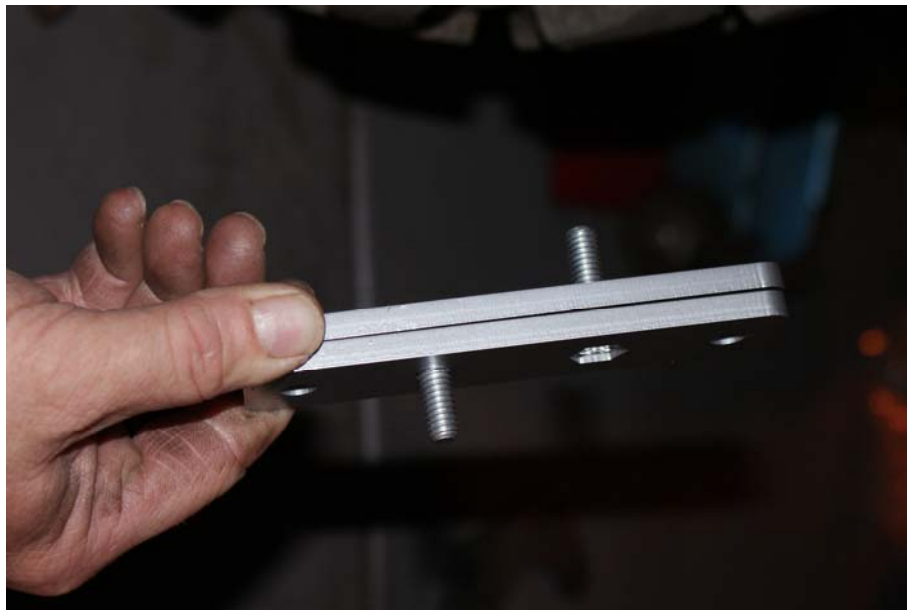
Sway Bar Instructions

2009 models are different from 2010

The following are for the 2009 models

8) Disconnect the sway bar from the frame on both sides. Insert supplied bolts into the brackets, placing the hex head into the hex cuts in each bracket. Assemble the two pieces as shown in diagrams below.





9) Attach the relocation bracket to the factory mounting location of the swaybar. The bolt pointing towards the front of the bike will attach in the lowest factory mounting hole. The bolt that is facing the rear of the bike will be where the top bolt of the swaybar clamp will attach to the relocation bracket. The lowest hole in the brackets will be below the factory mounts. Attach the swaybar and the relocation bracket to the frame using the supplied hardware. Refer to diagrams.





The following are for the 2010 models

10) Remove rear sway bar completely and flip it over, turning it upside down and slide back into the frame. Using one of the supplied plates on each side, re-attach the sway bar to the frame with the plate between the frame and the sway bar mount. This plate will be used as just a spacer between the frame and the sway bar mount. This spaces the sway bar rearward ¼". Flipping the sway bar changes the angle where the sway bar links attach.

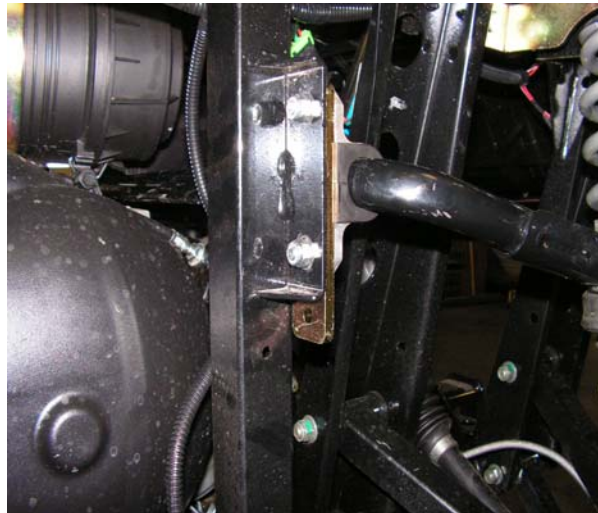


Diagram showing how sway bar should look after being reattached



WARRANTY: This kit will be warranted against defects in workmanship and materials ONLY. Problems from misuse, improper installation or abuse are not covered in the warranty. This warranty is good for one year (12 months) from date of purchase. All warranty claims MUST be accompanied by the original receipt or suitable proof of purchase date.