

**Xtreme Products Inc.**  
**Polaris Ranger 900XP**  
**2016 High Lifter Edition**  
**Kit No. XTPIRS4**  
**3 1/2 INCH**

**Read these instructions carefully. Xtreme recommends, a professional mechanic perform the installation. Care should be taken to follow all standard safety procedures.**

A thorough inspection of the suspension should be made prior to performing the installation. Any worn, bent or broken parts should be replaced. After installation another inspection should be made, checking for loose components or missing hardware. Inspect, again after eight hours of operation.

To begin, check to make sure all components and necessary tools are on hand.

**Components:** Five bags containing necessary brackets and hardware  
Two bags for the front, one for each side, including 01 & 02 brackets, hardware and spacers  
Two bags for the rear, one for each side, including 03 & 04 brackets, hardware and spacers  
One bag for the rear sway bar including brackets and hardware

**Disassembly / Installation Procedure**

1.) Begin by loosening the lug nuts on both front tires. Raise the unit, using a suitable lifting device or procedure, until the front tires are off the ground. If using a floor jack with stands, chock the rear wheels to prevent the unit from rolling. If using jack stands, make sure the stands are placed under the frame and not the body. Make sure the unit is stable and secure.

2.) Remove the tires / wheels.

***NOTE:** Now is a good time to check the threads on the lug studs. Check for rust, pulled threads or other deterioration that could cause a stud/thread failure.*

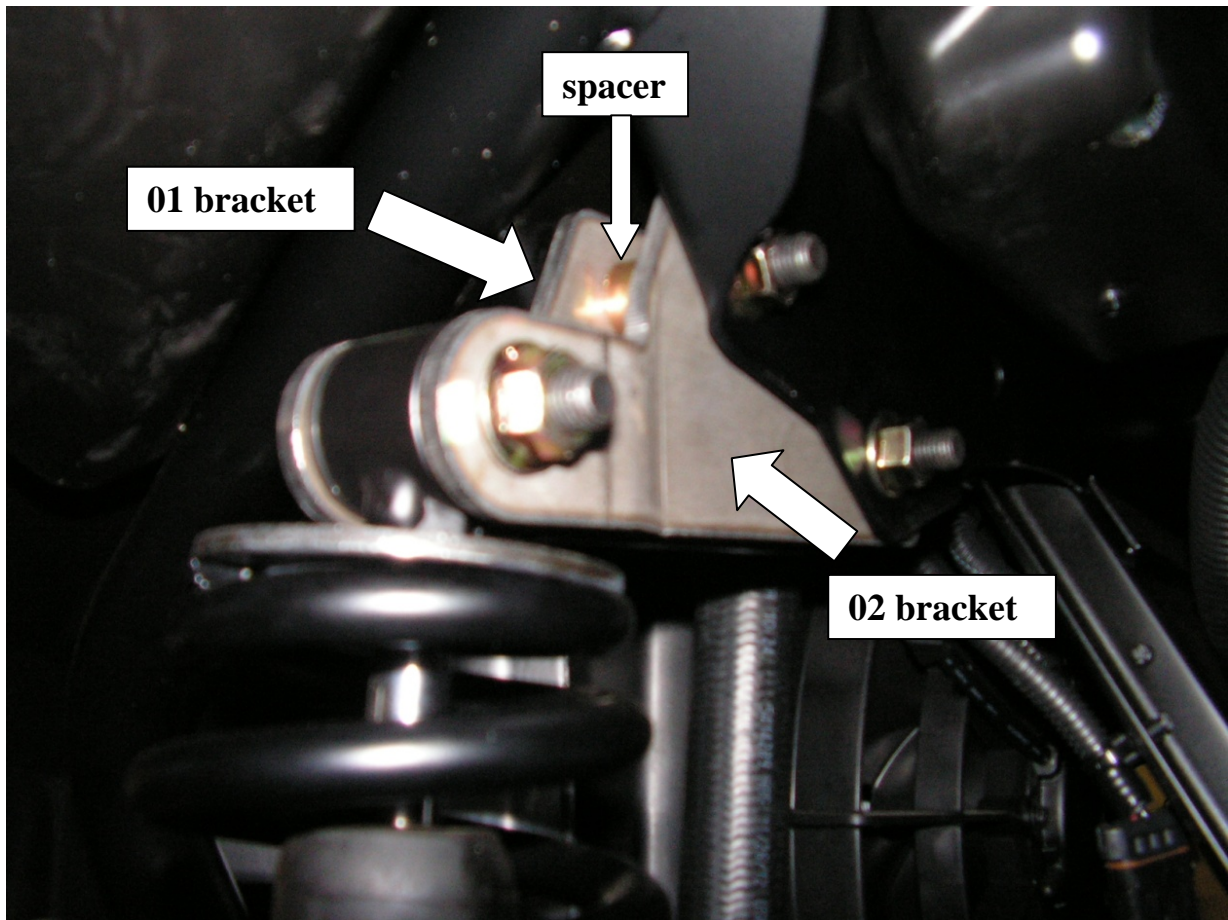
3.) Starting on the Driver's side, remove the upper shock attachment bolt and loosen the bottom bolt to allow the shock to be pulled outward. Insert the 01 bracket inside the factory shock location, at the front of the channel. Install the supplied bolts along with the supplied spacers inside the channel.

Place the 02 bracket onto the bolts on the inside rear of the channel. Install the nuts, but do not tighten at this time. Align the shock with the mounting location between the new brackets and install bolt and nut. All hardware can be tightened at this time. Refer to the Diagrams to ensure proper location of all brackets.

**Both brackets and the supplied spacer fit inside of the factory shock mount**

4.) Proceed to the passenger side and repeat the sequence of steps the same as the Drivers side. **With one exception:** on the Passenger side, the 02 bracket goes to the front side and the 01 goes to the rear.

**View is of Drivers side looking from rear to front  
The bracket placement is reversed for passenger side**

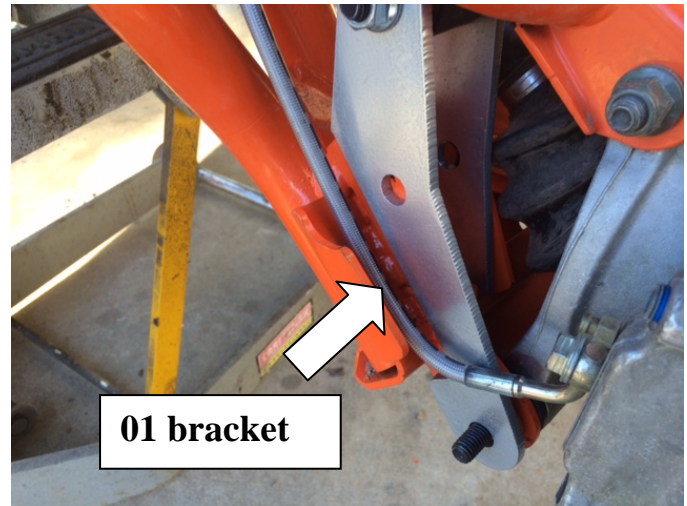


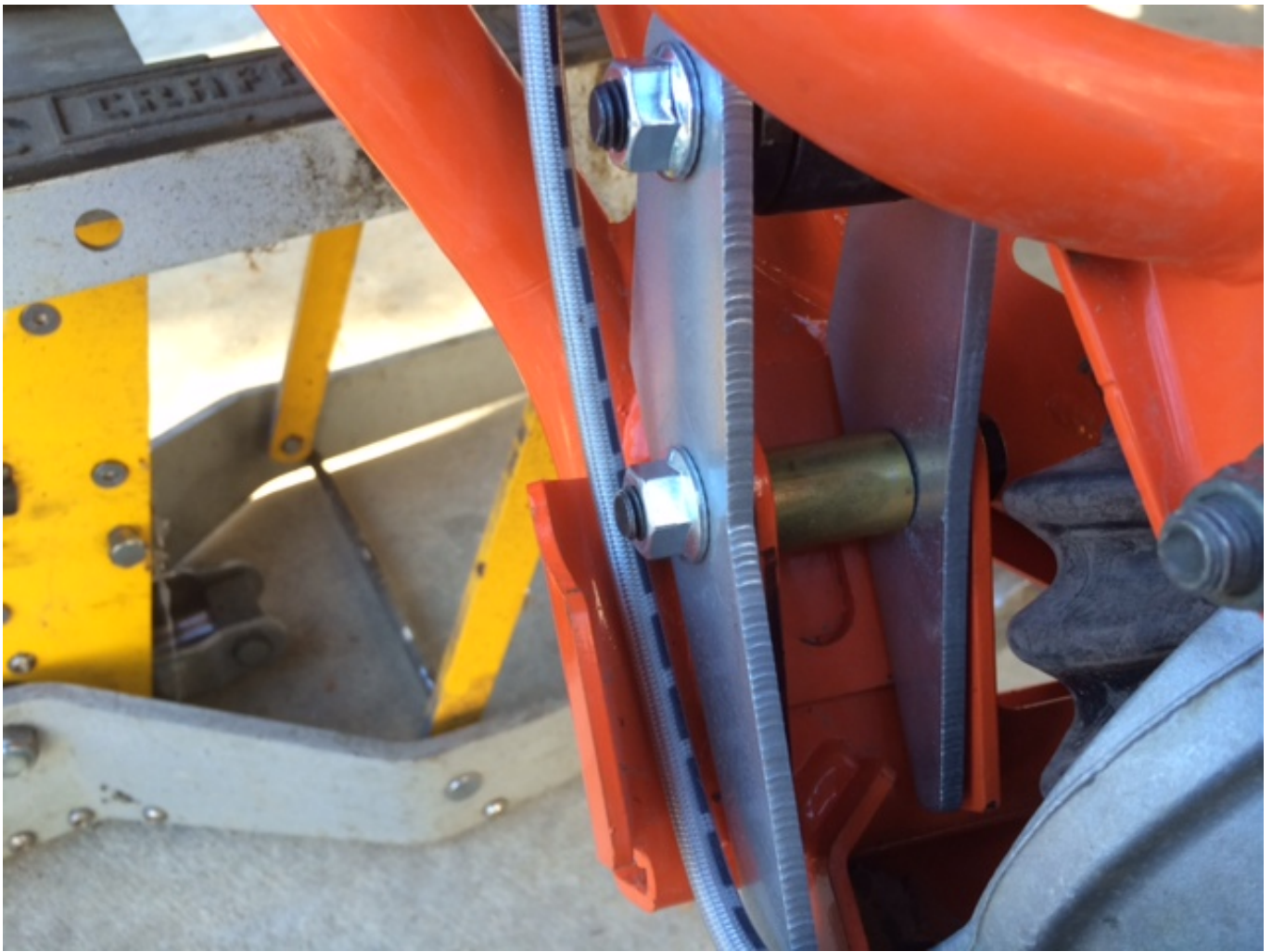
### **REAR Disassembly / Reassembly**

- 5) Lift the rear of the bike and place jack stands to support the weight and stabilize the bike. Remove the wheels.
- 6) Disconnect the sway bar links from both sides of the sway bar, leaving them attached to the lower mount.
- 7) Remove the lower shock attachment bolt and the lower hub mounting bolt. Loosely attach the shock to the brackets with the bolt pointing towards the rear. Install the new hub mounting bolt, from the front pointing towards the rear. Attach the bracket to this bolt using washers to space the bracket, as per picture. Position both brackets on the control arm and install the supplied sleeve and bolt to attach brackets at the original shock mounting position. **All new bolts must point rearward. Tighten all hardware.**

Repeat above instructions on opposite side

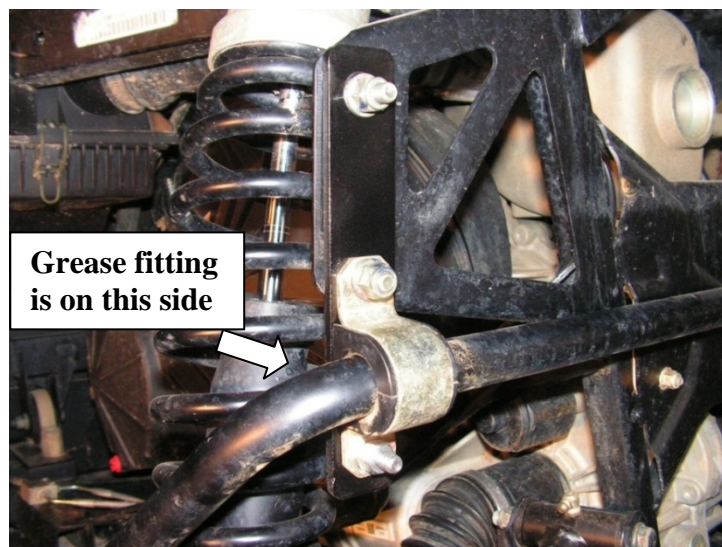
**View is of Passenger side looking from rear to front  
The brackets are positioned the same on Drivers side**





## Sway Bar Instructions

- 8) Disconnect the sway bar from the frame on both sides, saving hardware for reuse.
- 9) Attach the relocation bracket to the factory mounting location of the sway bar using the supplied bolt/nut. The small threaded hole for the grease fitting goes toward the bottom. Attach the sway bar to the relocation bracket and frame using the factory hardware. Reattach the sway bar to the sway bar links.
- 10) Install tire/wheels and take off jack/jack stands. Check all hardware for tightness. Check all clearances



## **Limited Lifetime Warranty / Warnings**

Your Xtreme Products Inc product is covered by the Limited Warranty explained below that gives you specific legal rights. This limited warranty is the only warranty Xtreme makes in connection with your product purchase. Xtreme Products Inc neither assumes nor authorizes any retailer or other person or entity to assume for it any other obligation or liability in connection with this product or limited warranty.

**What is covered?** Subject to the terms below, Xtreme Products will repair or replace its products found defective in materials or workmanship for so long as the original purchaser owns the ATV/UTV on which the product was originally installed. Your warrantor is Xtreme Products Inc.

**What is not covered?** Your Xtreme Products Limited Warranty does not cover products, parts or ATVs/UTVs that Xtreme Products determines to have been damaged by or subjected to:

- Alteration, modification or failure to maintain.
- Normal wear and tear (bushings, tie-rod ends, axles, bearings, etc.). Scratches or defects in product finishes (powder coating, plating, etc.),
- Damage to or resulting from racing, competitions, contests, jumping or activity causing the suspension to limit-out.
- Accidents, impact by rocks, trees, obstacles or other aspects of the environment.
- Theft, vandalism or other intentional damage.

**Remedy Limited to Repair / Replacement** The exclusive remedy provided hereunder shall, upon Xtreme's inspection and at Xtreme's option, be either repair or replacement of product or parts covered under this Limited Warranty. Customers requesting warranty consideration should contact Xtreme Products Inc. by phone (1-888-283-0977) to obtain a Returned Goods Authorization number. All removal, shipping and installation costs are customer's responsibility.

If a replacement part is needed before the Xtreme Products part in question can be returned, you must first purchase the replacement part. Then, if the part in question is deemed warrantable, you will be credited / refunded.

### **Other Limitations - Exclusion of Damages - Your Rights under State Law**

- Neither Xtreme Products nor your independent Xtreme Products dealers are responsible for any time loss, rental costs, or for any incidental, consequential or other damages you may have incurred.
- This Limited Warranty gives you specific rights. You may also have other rights that vary from state-to-state. For example, while all implied warranties are disclaimed herein, any implied warranty required by law is limited to the terms of our Limited Lifetime Warranty as described above. Some states do not allow limitations of how long an implied warranty lasts and / or do not allow the exclusion or limitation of incidental or consequential damages, so the limitations and exclusions herein may not apply to you.

### **Important Product Use and Safety Information / Warnings**

As a general rule, the taller a unit is, the easier it will roll over. Offset, as much as possible, what is lost in rollover resistance by increasing tire track width: In other words, go "wide" as you go "tall". Always use as wide a tire and wheel combination as feasible to enhance vehicle stability. We strongly recommend, because of rollover possibility, you should avoid situations where a side rollover may occur.

Generally, braking performance and capabilities are decreased when significantly larger / heavier tires and wheels are used (take this into consideration while driving).

Also, using tires that are taller or shorter than factory height will cause an erroneous speedometer reading.

Do not add, alter or fabricate any factory or aftermarket parts to increase vehicle height over the intended height of the Xtreme Products product purchased. Mixing or adding different component brands are not recommended.

