

**Xtreme Products Inc.**  
**Yamaha Grizzly 400 / 450**  
**WITH Power Steering**  
**2013-2014**  
**Kit No XTY501**  
**2 Inch lift**

**Read these instructions carefully. Xtreme recommends, a professional mechanic perform the installation. Care should be taken to follow all standard safety procedures.**

A thorough inspection of the suspension should be made prior to performing the installation. Any worn, bent or broken parts should be replaced. After installation another inspection should be made, checking for loose components or missing hardware. Inspect, again after eight hours of operation.

To begin, check to make sure all components and necessary tools are on hand.

**Components:**

The kit consists of two bags containing Hardware and Brackets.

Bag #1 for the Front plus (1) bracket -01

Bag #2 for the Rear plus (2) brackets -02

**Disassembly / Installation Procedure**

1.) Begin by loosening the lug nuts on both front tires. Raise the unit, using a suitable lifting device or procedure, until the front tires are off the ground. If using a floor jack with stands, chock the rear wheels to prevent the unit from rolling. If using jack stands, make sure the stands are placed under the frame and not the body. Make sure the unit is **stable and secure**.

2.) Remove the tires / wheels. **NOTE:** Now is a good time to check the threads on the lug studs. Check for rust, pulled threads or other deterioration that could cause a stud/thread failure.

**Pre-Installation NOTES:**

**NOTE 1:** For ease of installation you may want to loosen the front rack and fender bolts to allow more room and easier access for the installation.

**NOTE 2:** Make sure shock adjusters are at their lowest setting. When reinstalling the shocks you may have to use a pry bar to compress the shock and coil depending on how new the bike is and the condition of the coil.

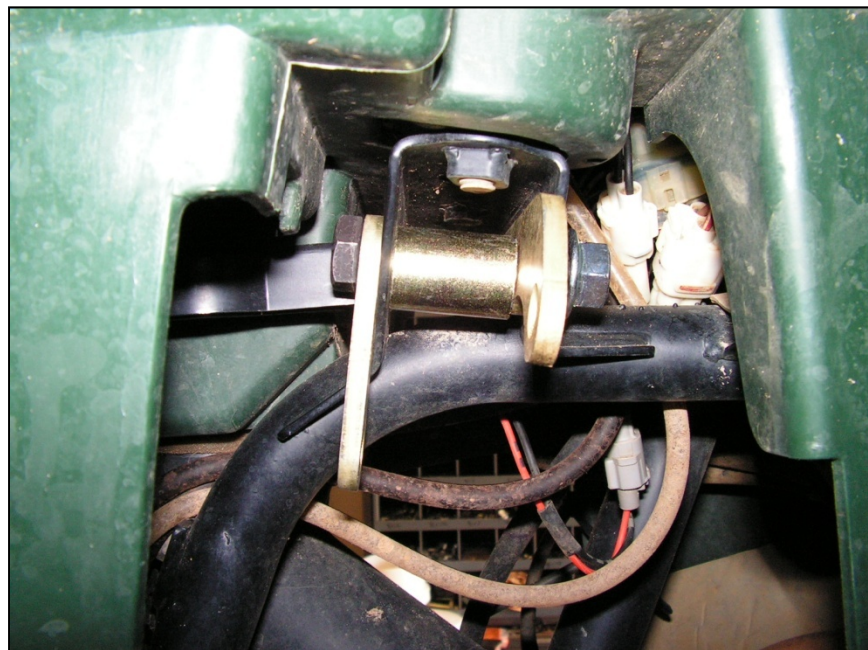
3.) Remove contents from Bag #1. Remove both of the wheel and the top shock mounting bolt, loosen bottom bolt allowing you to pull the shock out and away from the upper mount. Next slide the -01 bracket along rear inside of factory channel (cross-member).

Installing this will require some patience. Roll the long bar over on its side at a 45 degree angle and slide it all the way in. You may now set the bar up in the correct position. Place the supplied spacer in the cross-

member. Using a 10x60mm bolt, going from rear to front, go thru the factory cross-member, -01 bracket, sleeve and out the factory cross-member. Start a nut on the bolt and proceed to the other side.

4.) The Driver Side (Left side) will be the same as the Passenger Side (Right side) **EXCEPT** the bolt goes from Front to Rear. Placement of parts will be the same as before just the direction of the bolt will change. You may now readjust the shocks.

### **FRONT Lift: View from Driver Side**



### **Rear Lift**

5.) Begin raise the unit, using a suitable lifting device or procedure, until the rear of the bike is off the ground. If using a floor jack with stands, chock the front wheels to prevent the unit from rolling. If using jack stands, make sure the stands are placed under the frame and not the body. Make sure it is **stable and secure**, place jack under rear axle, you will need to be able to raise and lower the rear axle without the rest of the bike moving.

Assembly of Bag #2. It is not necessary for the wheels to be removed for the rear brackets but you may find it easier with the wheels removed.

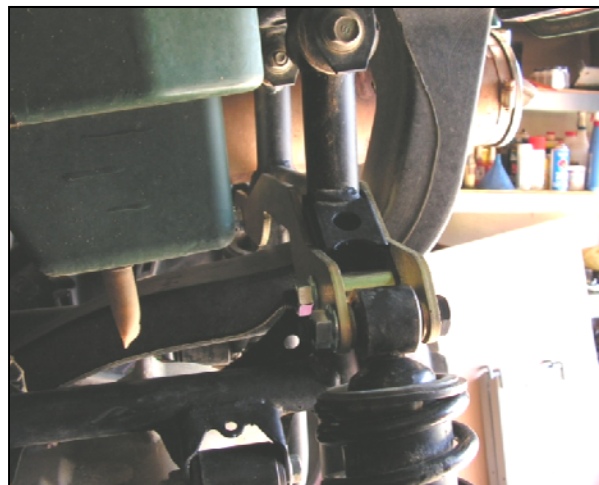
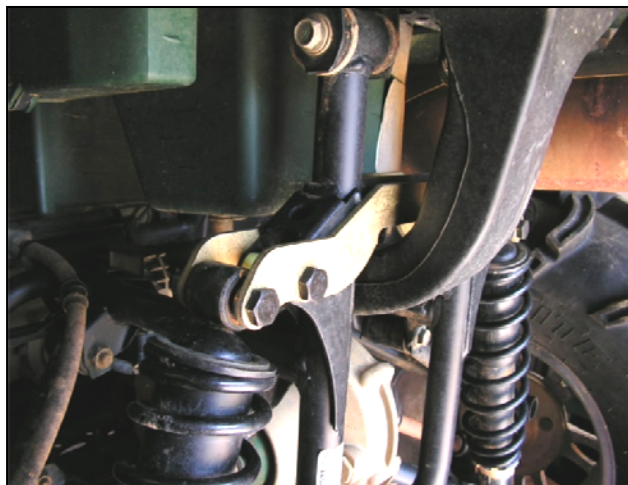
**NOTE:** Take the two rear -02 brackets: Notice that one of the inner holes is slightly elongated. (Slotted). The brackets are designed to clear the belt drive ducting that is slightly off-center. The slots and relief both go on the Driver Side (Left side looking at the bike from the rear).

6.) Lay both of the brackets on the drive ducting, making sure the brackets are phased properly. Take one of the 10x60mm bolts and insert it thru the bracket on the inner hole on one end. Hold the supplied spacer inside the factory mount. Go thru the spacer and out the front of the factory bracket. (You may install these bolts front to rear or rear to front.) Install nut finger tight.

Repeat on the opposite side of the bike. Install the shock between the two brackets, placing a washer on each side of the shock.

Tighten all nuts/bolts

### **REAR Lift: View from Driver Side**



7.) A good “Anti-Seize” compound should be applied to the lug studs and the tire/wheel combination of choice installed. Remove all jacks, jack stands and other devices used to lift and hold the bike. Check all brackets and bolts to be sure everything is tight.

**REMEMBER:** You just Unbolted and Bolted Steering and Drivetrain Components, **FIELD TEST** this machine at **SLOW** Speed before putting into full time Play or Work Mode. Check the Brakes for Proper Braking Action and Pedal Reserve. Until you get used to the handling, **SLOW** is the keyword.

### **Limited Lifetime Warranty / Warnings**

Your Xtreme Products Inc product is covered by the Limited Warranty explained below that gives you specific legal rights. This limited warranty is the only warranty Xtreme makes in connection with your product purchase. Xtreme Products Inc neither assumes nor authorizes any retailer or other person or entity to assume for it any other obligation or liability in connection with this product or limited warranty.

**What is covered?** Subject to the terms below, Xtreme Products will repair or replace its products found defective in materials or workmanship for so long as the original purchaser owns the ATV/UTV on which the product was originally installed. Your warrantor is Xtreme Products Inc.

**What is not covered?** Your Xtreme Products Limited Warranty does not cover products, parts or ATVs/UTVs that Xtreme Products determines to have been damaged by or subjected to:

- Alteration, modification or failure to maintain.
- Normal wear and tear (bushings, tie-rod ends, axles, bearings, etc.). Scratches or defects in product finishes (powder coating, plating, etc.),
- Damage to or resulting from racing, competitions, contests, jumping or activity causing the suspension to limit-out.
- Accidents, impact by rocks, trees, obstacles or other aspects of the environment.
- Theft, vandalism or other intentional damage.

**Remedy Limited to Repair / Replacement** The exclusive remedy provided hereunder shall, upon Xtreme’s inspection and at Xtreme’s option, be either repair or replacement of product or parts covered under this

Limited Warranty. Customers requesting warranty consideration should contact Xtreme Products Inc. by phone (1-888-283-0977) to obtain a Returned Goods Authorization number. All removal, shipping and installation costs are customer's responsibility.

If a replacement part is needed before the Xtreme Products part in question can be returned, you must first purchase the replacement part. Then, if the part in question is deemed warrantable, you will be credited / refunded.

**Other Limitations - Exclusion of Damages - Your Rights under State Law**

- Neither Xtreme Products nor your independent Xtreme Products dealers are responsible for any time loss, rental costs, or for any incidental, consequential or other damages you may have incurred.
- This Limited Warranty gives you specific rights. You may also have other rights that vary from state-to-state. For example, while all implied warranties are disclaimed herein, any implied warranty required by law is limited to the terms of our Limited Lifetime Warranty as described above. Some states do not allow limitations of how long an implied warranty lasts and / or do not allow the exclusion or limitation of incidental or consequential damages, so the limitations and exclusions herein may not apply to you.

**Important Product Use and Safety Information / Warnings**

As a general rule, the taller a unit is, the easier it will roll over. Offset, as much as possible, what is lost in rollover resistance by increasing tire track width: In other words, go "wide" as you go "tall". Always use as wide a tire and wheel combination as feasible to enhance vehicle stability. We strongly recommend, because of rollover possibility, you should avoid situations where a side rollover may occur.

Generally, braking performance and capabilities are decreased when significantly larger / heavier tires and wheels are used (take this into consideration while driving).

Also, using tires that are taller or shorter than factory height will cause an erroneous speedometer reading.

Do not add, alter or fabricate any factory or aftermarket parts to increase vehicle height over the intended height of the Xtreme Products product purchased. Mixing or adding different component brands are not recommended.