

**Xtreme Products Inc.**  
**Yamaha Viking 700, 3 & 6 Seat Models**  
**2014-2015 Models**  
**Kit No. XTYV700**  
**2 Inch Kit**

**Read these instructions carefully. Xtreme recommends, a professional mechanic perform the installation. Care should be taken to follow all standard safety procedures.**

A thorough inspection of the suspension should be made prior to performing the installation. Any worn, bent or broken parts should be replaced. After installation another inspection should be made, checking for loose components or missing hardware. Inspect, again after eight hours of operation.

To begin, check to make sure all components and necessary tools are on hand.

**Components:**

- The kit consists of two bags containing Hardware and Brackets.
- Bag #1 for both sides of the front plus brackets
- Bag #2 for both sides of the rear plus brackets
- Bag #3 for both sides of the rear sway bar relocation plus brackets

**Disassembly / Installation Procedure**

1.) Begin by loosening the lug nuts on both front tires. Raise the unit, using a suitable lifting device or procedure, until the front tires are off the ground. If using a floor jack with stands, chock the rear wheels to prevent the unit from rolling. If using jack stands, make sure the stands are placed under the frame and not the body. Make sure the unit is **stable and secure**.

2.) Remove the tires / wheels.

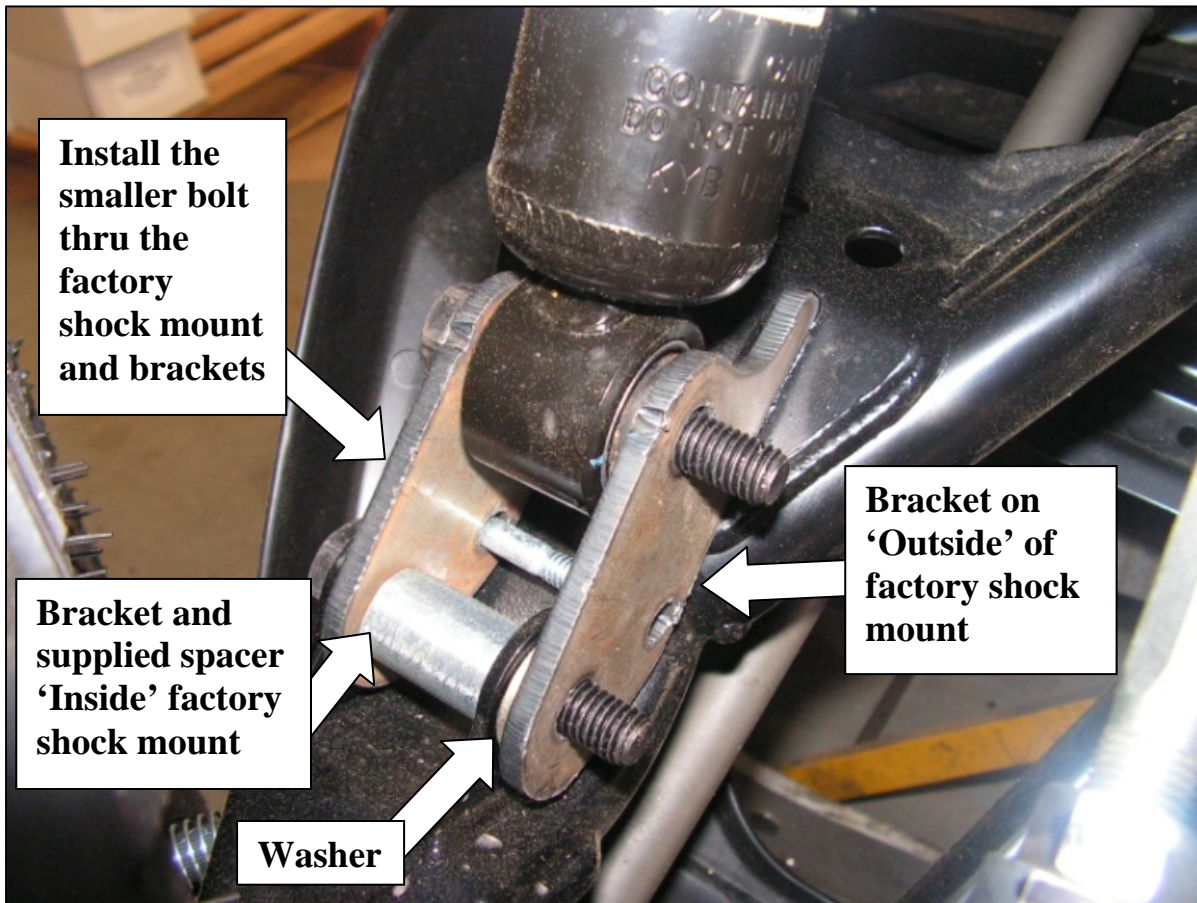
**NOTE:** *Now is a good time to check the threads on the lug studs. Check for rust, pulled threads or other deterioration that could cause a stud/thread failure.*

**READ THIS PRIOR TO BEGINNING INSTALLATION**

3.) On the Driver Side, remove lower shock mounting bolt. Place one of the brackets on the ‘Inside’ (front side) of the factory shock mount. **See the picture below for the sleeve and washer location.** Install the other bracket on the ‘Outside’ (rear side) of the factory shock mount. Install the smaller bolt thru the factory shock mount and the lift brackets. Attach shock at the new mounting location and install all nuts. Do not tighten at this time.

Repeat above steps on the Passenger side. After completed, install tires and lower back onto ground. Then tighten all hardware.

## FRONT Lift: View of Driver Side

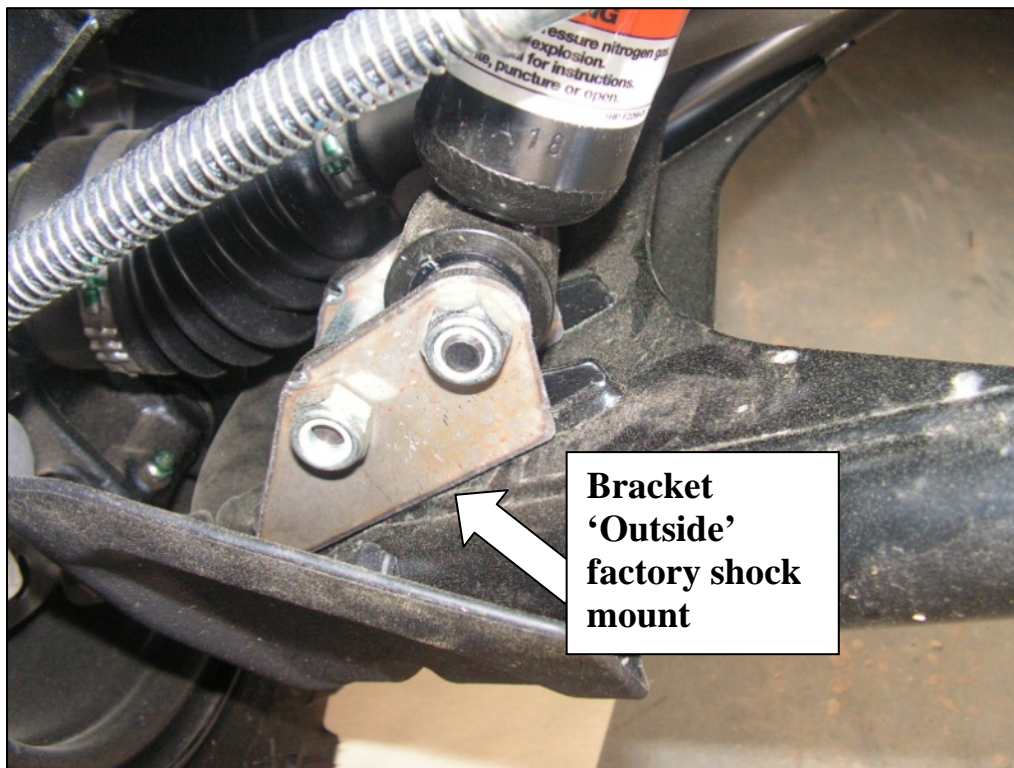
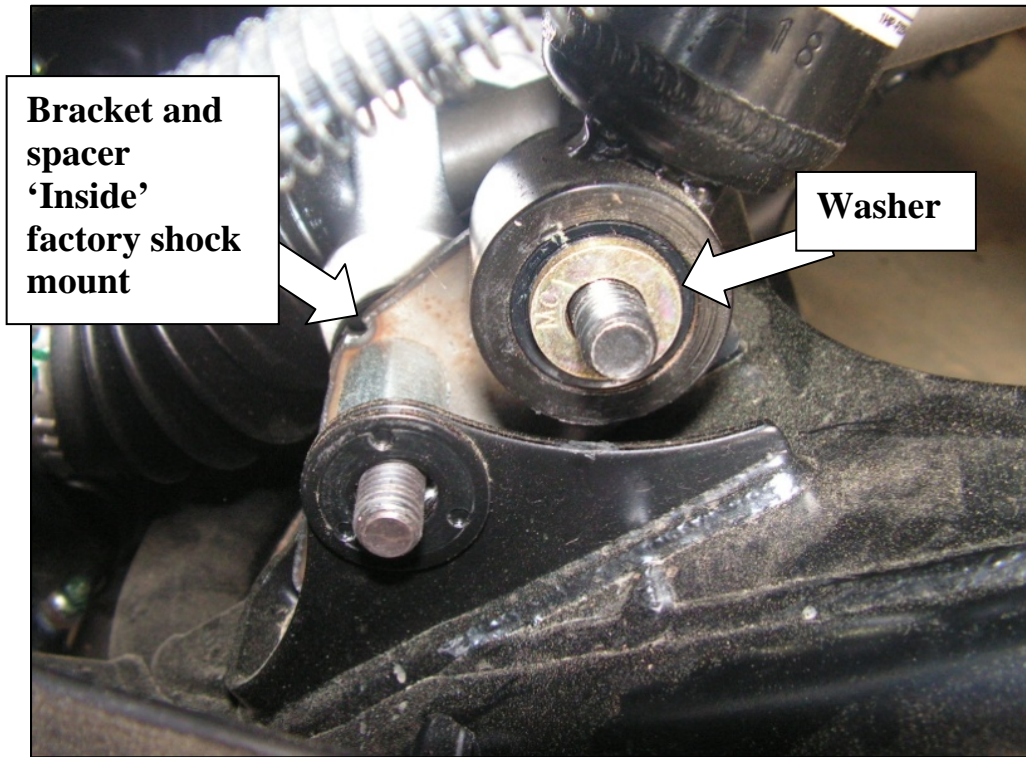


### Rear Lift

- 4.) Begin raising the unit, using a suitable lifting device or procedure, until the rear of the bike is off the ground. If using a floor jack with stands, chock the front wheels to prevent the unit from rolling. If using jack stands, make sure the stands are placed under the frame and not the body. Make sure it is **stable and secure**.
- 5.) Remove both rear tires. Disconnect the sway bar from both sides, saving the bushings and washers for reuse. Remove lower shock mounting bolt and discard. Place the supplied brackets on the control arm in the position shown in the picture, one bracket on the inside of the factory shock mount, the other bracket on the outside of the factory shock mount. Place the supplied sleeve inside the mount and install bolt and nut.

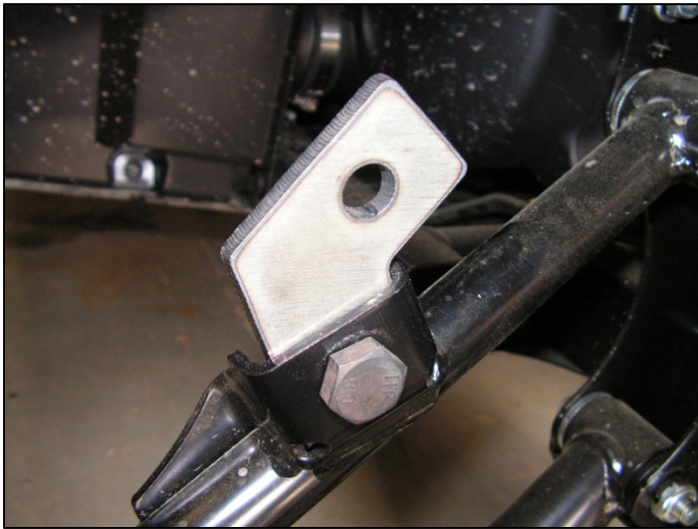
**Note washer location in the photo below.** Bolt the shock to the new mounting brackets and tighten all hardware.

**REAR Lift: View of Driver Side**



6.) Install the supplied sway bar mounting brackets on each side. There is a Driver Side & Passenger Side (Left and Right) side part. The -03 bracket is for Driver side, the -04 bracket is for Passenger side.

### **REAR Sway Bar: View of Driver Side**



7.) A good “Anti-Seize” compound should be applied to the lug studs and the tire/wheel combination of choice installed. Remove all jacks, jack stands and other devices used to lift and hold the bike. Check all brackets and bolts to be sure everything is tight.

**REMEMBER:** You just Unbolted and Bolted Steering and Drivetrain Components, **FIELD TEST** this machine at **SLOW** Speed before putting into full time Play or Work Mode. Check the Brakes for Proper Braking Action and Pedal Reserve. Until you get used to the handling, **SLOW** is the keyword.

### **Limited Lifetime Warranty / Warnings**

Your Xtreme Products Inc product is covered by the Limited Warranty explained below that gives you specific legal rights. This limited warranty is the only warranty Xtreme makes in connection with your product purchase. Xtreme Products Inc neither assumes nor authorizes any retailer or other person or entity to assume for it any other obligation or liability in connection with this product or limited warranty.

**What is covered?** Subject to the terms below, Xtreme Products will repair or replace its products found defective in materials or workmanship for so long as the original purchaser owns the ATV/UTV on which the product was originally installed. Your warrantor is Xtreme Products Inc.

**What is not covered?** Your Xtreme Products Limited Warranty does not cover products, parts or ATVs/UTVs that Xtreme Products determines to have been damaged by or subjected to:

- Alteration, modification or failure to maintain.
- Normal wear and tear (bushings, tie-rod ends, axles, bearings, etc.). Scratches or defects in product finishes (powder coating, plating, etc.),
- Damage to or resulting from racing, competitions, contests, jumping or activity causing the suspension to limit-out.
- Accidents, impact by rocks, trees, obstacles or other aspects of the environment.
- Theft, vandalism or other intentional damage.

**Remedy Limited to Repair / Replacement** The exclusive remedy provided hereunder shall, upon Xtreme's inspection and at Xtreme's option, be either repair or replacement of product or parts covered under this Limited Warranty. Customers requesting warranty consideration should contact Xtreme Products Inc. by phone (1-888-283-0977) to obtain a Returned Goods Authorization number. All removal, shipping and installation costs are customer's responsibility.

If a replacement part is needed before the Xtreme Products part in question can be returned, you must first purchase the replacement part. Then, if the part in question is deemed warrantable, you will be credited / refunded.

**Other Limitations - Exclusion of Damages - Your Rights under State Law**

- Neither Xtreme Products nor your independent Xtreme Products dealers are responsible for any time loss, rental costs, or for any incidental, consequential or other damages you may have incurred.
- This Limited Warranty gives you specific rights. You may also have other rights that vary from state-to-state. For example, while all implied warranties are disclaimed herein, any implied warranty required by law is limited to the terms of our Limited Lifetime Warranty as described above. Some states do not allow limitations of how long an implied warranty lasts and / or do not allow the exclusion or limitation of incidental or consequential damages, so the limitations and exclusions herein may not apply to you.

**Important Product Use and Safety Information / Warnings**

As a general rule, the taller a unit is, the easier it will roll over. Offset, as much as possible, what is lost in rollover resistance by increasing tire track width: In other words, go "wide" as you go "tall". Always use as wide a tire and wheel combination as feasible to enhance vehicle stability. We strongly recommend, because of rollover possibility, you should avoid situations where a side rollover may occur.

Generally, braking performance and capabilities are decreased when significantly larger / heavier tires and wheels are used (take this into consideration while driving).

Also, using tires that are taller or shorter than factory height will cause an erroneous speedometer reading.

Do not add, alter or fabricate any factory or aftermarket parts to increase vehicle height over the intended height of the Xtreme Products product purchased. Mixing or adding different component brands are not recommended.

